

# SAMFIX Platform User Help

Version 1 22/06/2020

## Summary

<i>The SAMFIX Platform site</i> .....	2
<i>Map of the site (public contents)</i> .....	2
<i>Performance indicators</i> .....	2
<i>Maps</i> .....	3
<i>Monitoring</i> .....	5

## The SAMFIX Platform site

SAMFIX Platform provides knowledge about the pressures and impacts of the Xylosandrus invasion in important natural areas of Italy, Spain and France, and shows the results of the monitoring, mitigation, promotion and citizen science activities carried out within the SAMFIX project. For detailed information about the Xylosandrus and the project activities visit [lifesamfix.eu](http://lifesamfix.eu).

## Map of the site (public contents)

sections / main manu link	sub-sections	summary description
<b>Dashboard</b>		This section contains summary information about the more relevant "Performance Indicators" of the SAMFIX project, the last pictures taken in citizen science activity and shortcuts to the most relevant public sections of the portal.
<b>Performance indicators</b>	Indicators categories	This section contains the "Performance Indicators" of the SAMFIX project in detail, organized by category
<b>Maps</b>		This is the "Web-GIS" section of the portal: an interactive map with GIS navigation and query tools
<b>Monitoring</b>	Xylosandrus reporting map	Xylosandrus observations reported by means of the "SAMFIX Agent" app (citizen science activity), with a general map and links to the observation monographs
	Pictures gallery	Pictures gallery from "SAMFIX Agent" app (citizen science activity)

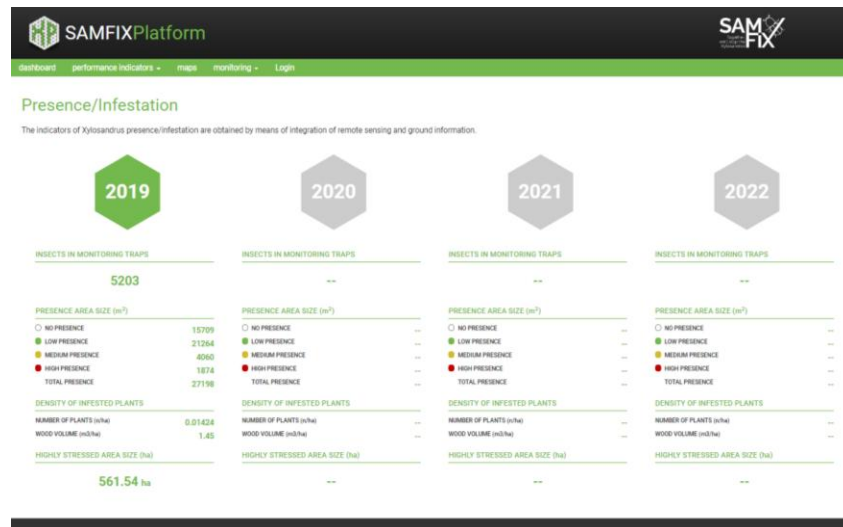
## Performance indicators

The project "Performance Indicators" summarize some of the main results of the SAMFIX project during the years of its development. In this section you can find indicators, with yearly detail, related to:

- **Presence/Infestation** (of Xylosandrus): these indicators are obtained by means of integration of remote sensing and ground survey;
- **Monitoring traps:** number of captured insects within the monitoring activity;

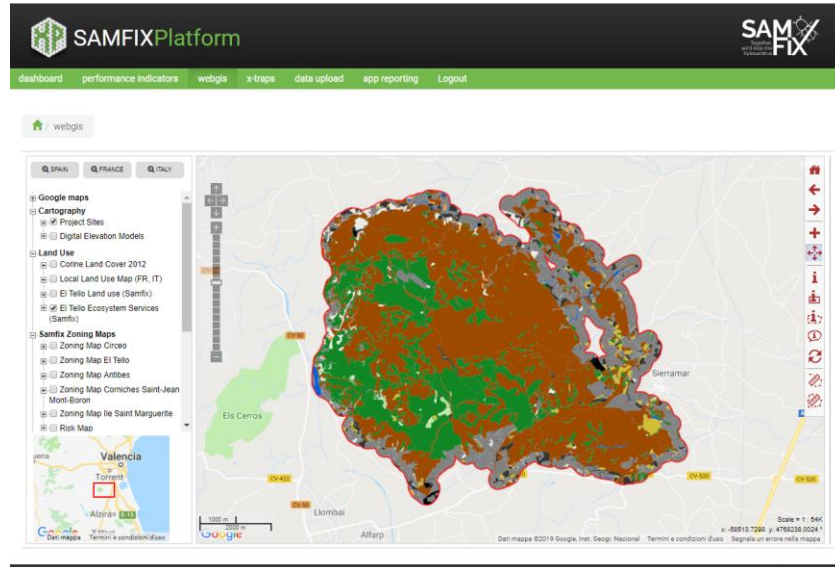
- **Participation:** the most relevant yearly and total statistics about citizen science and stakeholders activities carried out within the project;
- **Communication:** the most relevant yearly and total statistics about communication and promotion activities of the project.

*Indicators category page example*



## Maps

The Web-GIS interactive framework contains the project thematic cartography; it is populated during the project with thematic maps summarizing the monitoring activity developed periodically.



### Basic cartography and themes:

- Public base layers: Google satellite, streets, hybrid, terrain
- Protected areas involved in the project
- Digital elevation models
- Land use: Corine Land Cover 2012 and local land use maps

### Remote sensing data:

- Satellite real color
- Vegetation index maps

### Samfix zoning and monitoring maps:

- Zoning maps of the core parks related to the risk assessment
- Risk maps of the core parks

### Georeferenced project monitoring activities

- Xylosandrus survey points
- Dried vegetation/crowns

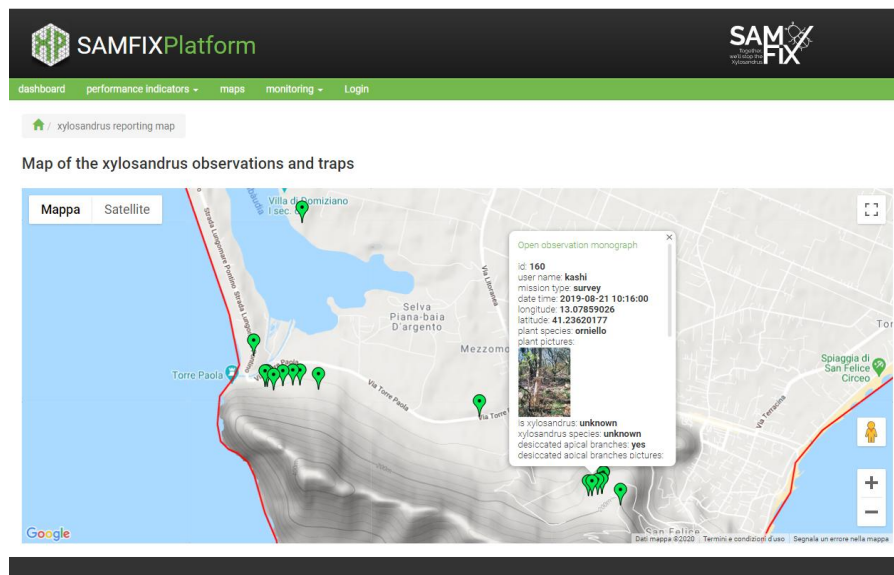
### Features of the Web-GIS interface:

- Interactive map (zoom and pan tools)
- Interactive overview map
- Table of Contents panel (on the left) with legends, by theme categories
- Shortcut button to specific project areas
- Identify tools: spatial features query by point or polygon selection
- Measure tools (length, area)

## Monitoring

The SAMFIX Agent app is the free tool with which all citizens can participate in the SAMFIX citizen science project. By means of the SAMFIX Agent app, park visitors and citizens report evidences of the Xylosandrus attacks, either with a survey form or with the SAMFIX Game; some features of the insects attack can be documented by means of the camera. The whole collection of the data and files coming from the SAMFIX Agent app is filtered and validated by the scientific staff of the project and published in the Monitoring section.

In **Monitoring** -> **xylosandrus reporting map** you can access all the validated and published survey records and pictures.



- Click on a mark in the map to open the balloon with a preview of the observation details
- Click on a picture thumbnail in the balloon to view the original picture
- Click **“Open observation monograph”** in the balloon to view the detail page of an observation. In the monograph you can slide the pictures gallery, enlarge the pictures and view a zoomed map on the marker

In **Monitoring** -> **pictures gallery** you will find the whole collection of the pictures related to the validated observations. Clicking on each picture you can reach the observation monograph.